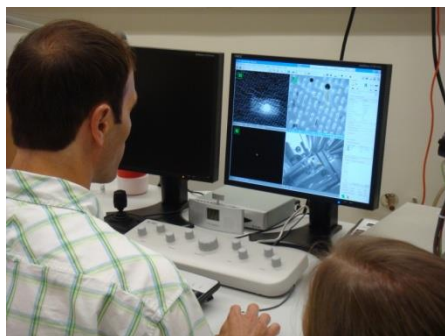


RESEARCH EXPERIENCES FOR TEACHERS

Yale University • Summer 2017

Center for Research on Interface Structures and Phenomena

National Science Foundation Materials Research Science & Engineering Center



Applications due by April 01, 2017

The **CRISP RET fellowship** program provides teachers with the opportunity to conduct team-based interdisciplinary research. During the course of this four-week research program, fellows will be conducting research under the advisement of university faculty and researchers.

RET FELLOWSHIP PROGRAM: July 3 – July 31, 2017

STIPEND: Each RET participant will receive a stipend of **\$2000**. Additional funds may be awarded upon the development of curricular materials.

ELIGIBILITY: This program is open to **middle school, high school and community college teachers** who teach science, technology, engineering and/or mathematics (STEM). Minorities, women and persons with disabilities are strongly encouraged to apply.

APPLICATION PROCESS: The selection of RET participants is based on a personal statement, resume/CV and one letter of recommendation. The application is available online at the address below.

http://crunch.southernct.edu/?page_id=467



RET FELLOWSHIPS ARE SPONSORED BY THE NATIONAL SCIENCE FOUNDATION

